


OWNER'S MANUAL/ SHOREMASTER 1896 CANTILEVER LIFT

WEIGHT CAPACITY: 1800 lbs.                      INTERIOR WIDTH: 96"

EFFECTIVE 11-1-92

Before attempting to operate the lift, read this owners manual thoroughly.

# SHOREMASTER

A stylized, black silhouette of a boat's wake, positioned directly beneath the 'SHOREMASTER' text. The wake consists of several curved, overlapping shapes that suggest the movement of water behind a vessel.

PLEASE KEEP THIS FOR FUTURE REFERENCE

The following parts list, operating/ safety procedures, assembly instructions and maintenance schedule is for your ShoreMaster boat lift. Please read through the manual entirely before attempting to operate the lift. Pay close attention to all safety related material. If you have any questions contact your dealer or call ShoreMaster toll-free 1-(800) 328-8945.

When assembling any product, the proper safety precautions must be observed. Please make sure that during assembly all the parts are on a flat, clean work area to minimize the chance of accidents. Also, DO NOT allow younger children in the area when assembling, installing, and removing the lift from the water. ALWAYS wear protective eyewear and clothing when assembling, installing, and removing the lift from the water. REMEMBER, ALWAYS PUT SAFETY FIRST!!!

**\*\* IMPORTANT \*\***

NEVER exceed the listed weight capacity of a boat lift. Doing so will invalidate the warranty, and could result in damage to the lift and/or boat and serious personal injury or death.

REMEMBER, your boat weight includes: boat, motor, battery, oil, fuel, gear, etc. !!!

Grease pulleys and winch when it is new and every spring and fall. Not doing so will invalidate your warranty.

## WINCH SAFETY

The winch for this lift is strickly for watercraft lifting operations. It is not to be used as a method of supporting or transporting people, or for loads over areas where people may be present.

Check winch for proper operations on each use. If it is damaged in anyway do not attempt to operate.

Never allow children or those unfamiliar with the operation of the lift to use it.

NEVER exceed recommended lift capacity. Personal injury may result.

Never apply load to winch with cable fully unwrapped. There should be at least four full turns of cable on the hub.

NEVER raise the ratchet pawl as a means to lower the lift. Doing so may result in serious injury.

## WINCH MAINTENANCE

It is recommended that the winch be inspected periodically (at least twice yearly). Necessary preventive maintenance is required for maximum performance of the winch.

1. Remove all the load from the lift. Then turn down until the cable BEGINS to slack. Remove wheel kit and wheel from shaft.
2. Remove brake pads and ratchet gear from shaft. Sand off any rust or corrosion on these parts. DO NOT grease the brake pad mechanism.
3. Replace brake pads and ratchet gear on the shaft. One brake pad should be on each side of the ratchet gear. Replace wheel and wheel kit.

### VERY IMPORTANT:

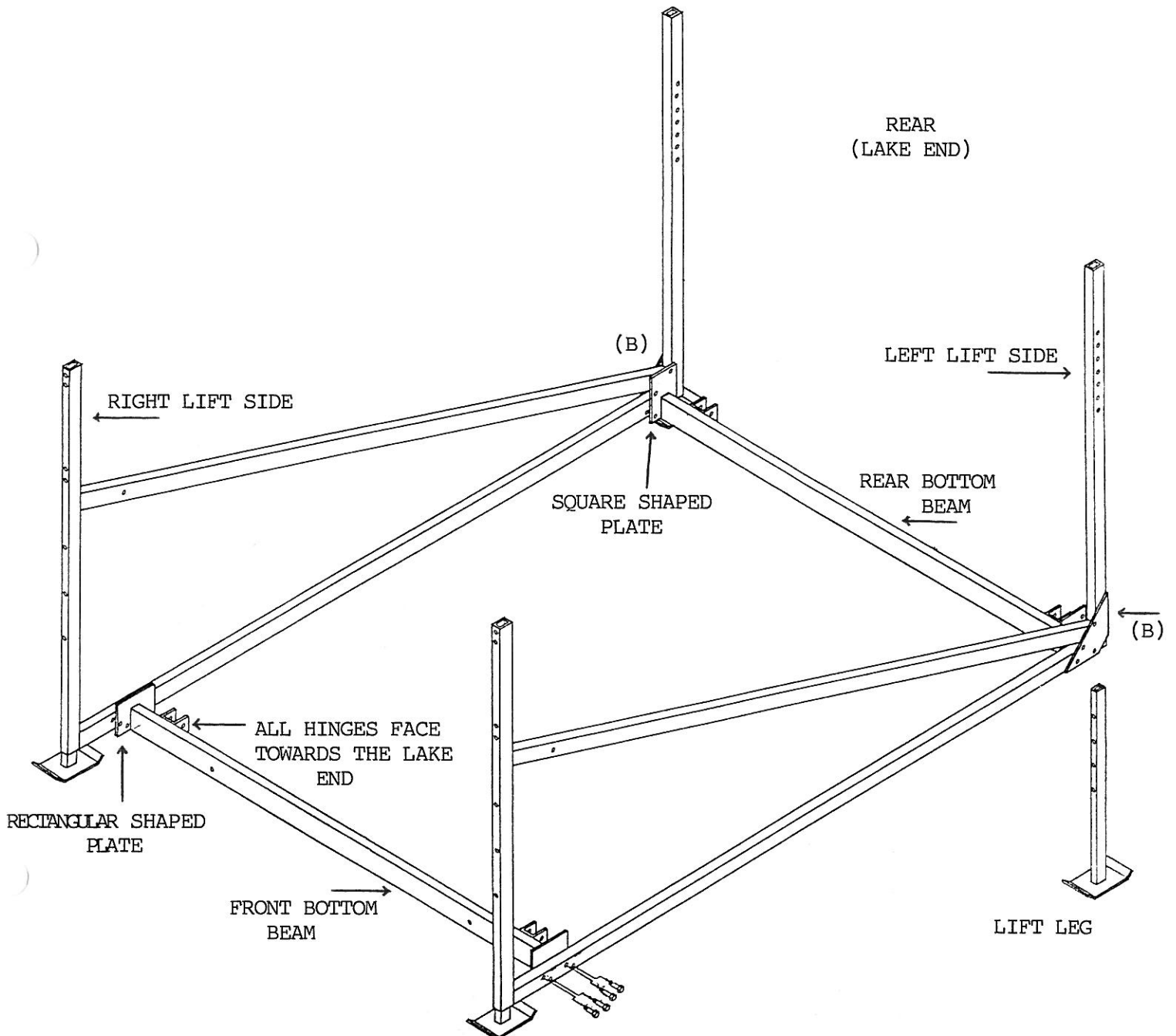
4. Check to be sure that ratchet pawl and spring (if used on your lift) are aligned on the ratchet gear. You can do this by turning the wheel clockwise. A clicking sound should be heard. If it is not functioning properly, check to see that your spring (if used on your lift) is in place. New ShoreMaster models with capacities of 2500# and higher manufactured after January 1992 do not use springs on the ratchet pawl.
5. Remove the cover and check to see that gears, shafts and chains are attached and turning freely. Grease all bearings and gear teeth with good wheel bearing grease.
6. Replace winch cover. Check mounting of winch to be sure that it is secure and properly aligned. Also, check cable to make sure it is secure and there is no abnormal stiffness or broken strands.
7. Replace any worn or broken parts with authorized ShoreMaster parts available at your local dealer or ShoreMaster.

STEP 1

**\*\*IMPORTANT\*\***

DO NOT FULLY TIGHTEN BOLTS & NUTS UNTIL YOU ARE FINISHED WITH ASSEMBLY

- (A) INSERT ALL (4) LIFT LEGS INTO LIFT SIDES AND BOLT IN PLACE USING 3/8" X 2 3/4" MACHINE BOLTS.
- (B) SET LIFT SIDES UP AS SHOWN ABOUT 10 FEET APART. THE TRIANGULAR PLATES ON THE LIFT SIDES SHOULD BE ON THE OUTSIDE.
- (C) BOLT THE FRONT & REAR BOTTOM BEAMS TO THE LIFT SIDES USING 3/8" X 2 3/4" MACHINE BOLTS. THE BOTTOM BEAM THAT HAS THE SQUARE PLATE IS THE REAR BOTTOM BEAM AND THE BOTTOM BEAM THAT HAS THE RECTANGULAR PLATE IS THE FRONT BOTTOM BEAM.

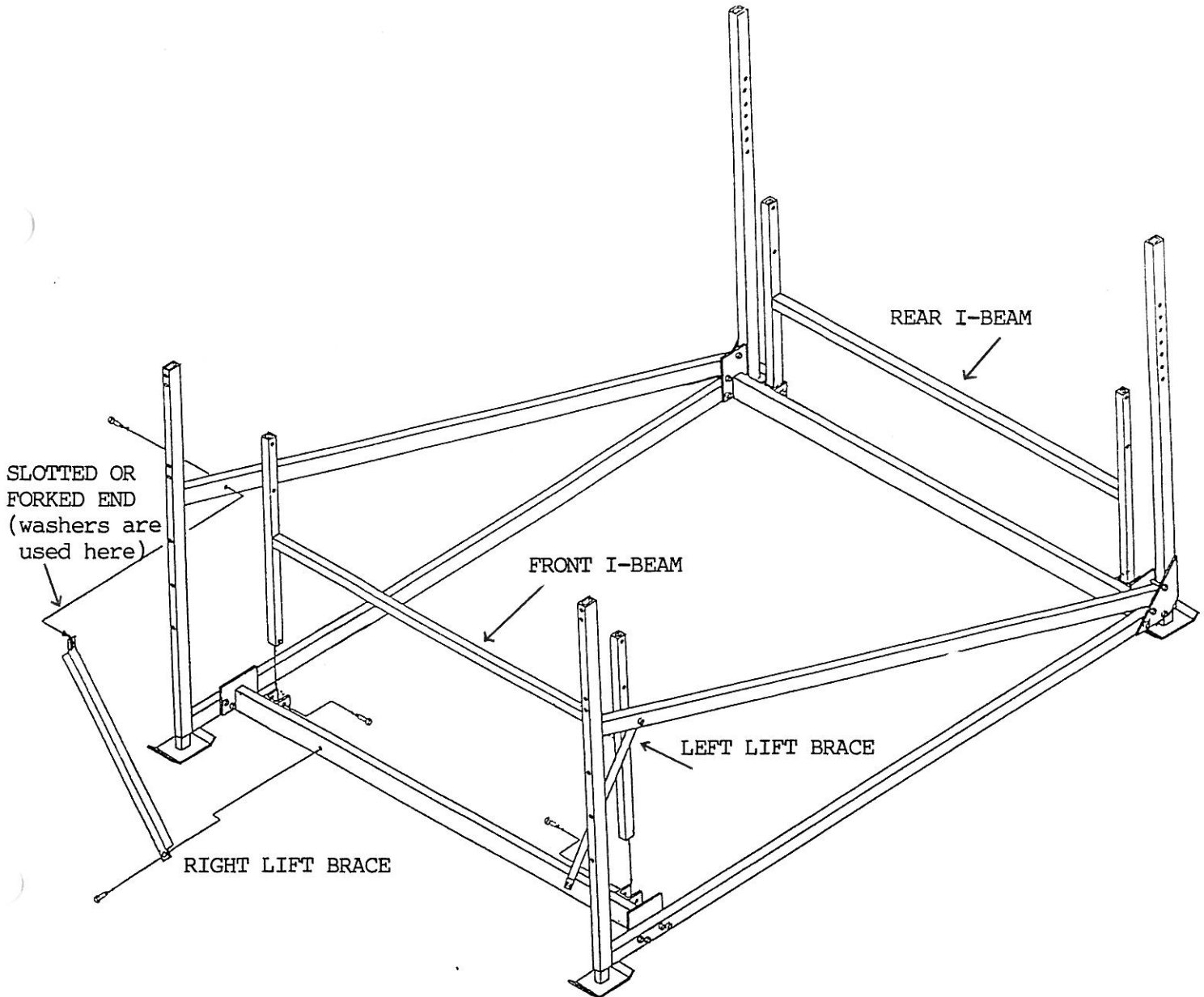


## STEP 2

- (A) ATTACH EACH I-BEAM TO THE FRONT & REAR BOTTOM BEAMS AS SHOWN USING 1/2" X 3 1/2" MACHINE BOLTS AND LOCKING NUTS. EACH I-BEAM IS THE SAME. DO NOT OVERTIGHTEN TO ALLOW FREE SWIVEL.
- (B) ATTACH EACH LIFT BRACE AS SHOWN USING 3/8" X 2 3/4" MACHINE BOLTS. THE SLOTTED OR FORKED END CONNECTS TO THE LIFT SIDE AND WASHERS ARE RECOMMENDED TO BE USED HERE. THE OTHER END OF THE BRACE CONNECTS TO THE FRONT BOTTOM BEAM. THE BRACES SHOULD BE TIGHTENED SO THAT THE LIFT SIDES ARE NOT BOWING IN OR OUT.

### **\*\*NOTE\*\***

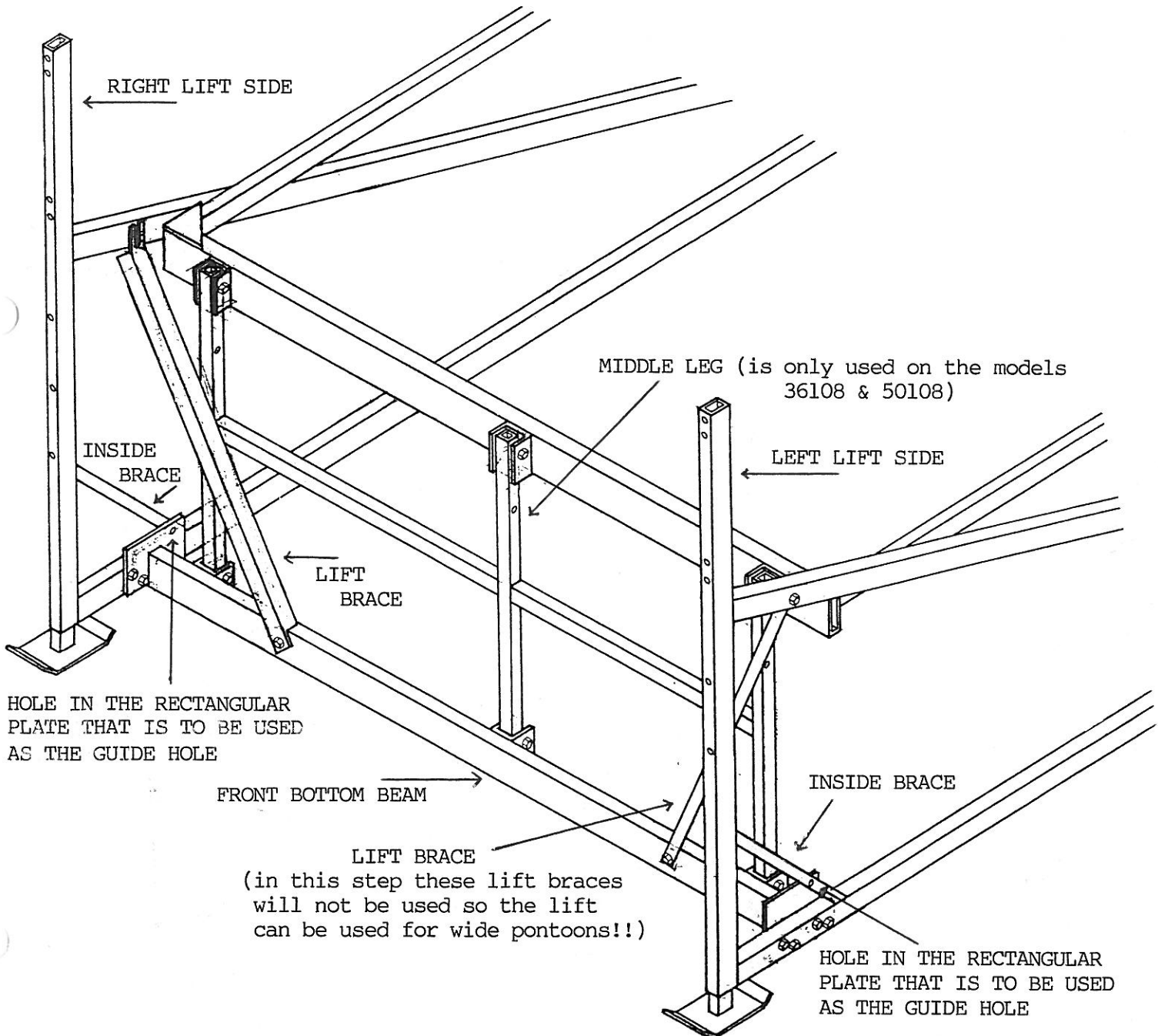
IF THIS LIFT IS BEING USED TO LIFT A PONTOON, PLEASE LOOK AT STEP 2C (next page) TO MAKE SURE YOUR LIFT IS BEING PROPERLY BRACED!!!



STEP 2C

\*\*TO ACCOMMODATE WIDE PONTOONS\*\*

THE LIFT BRACES CAN NOT BE USED BECAUSE THEY WOULD GET IN THE WAY. TO BRACE THE LIFT SIDES IN THIS SITUATION, USE THE HOLES THAT ARE IN THE RECTANGULAR SHAPED PLATES ON THE FRONT BOTTOM BEAMS AS GUIDE HOLES AND DRILL A HOLE THROUGH THE INSIDE BRACES ON THE LIFT SIDES. THEN BOLT THE FRONT BOTTOM BEAM TO THE INSIDE BRACES USING 3/8" X 2 3/4" MACHINE BOLTS. THIS WILL HELP PREVENT YOUR LIFT SIDES FROM BOWING IN OR OUT.



STEP 3

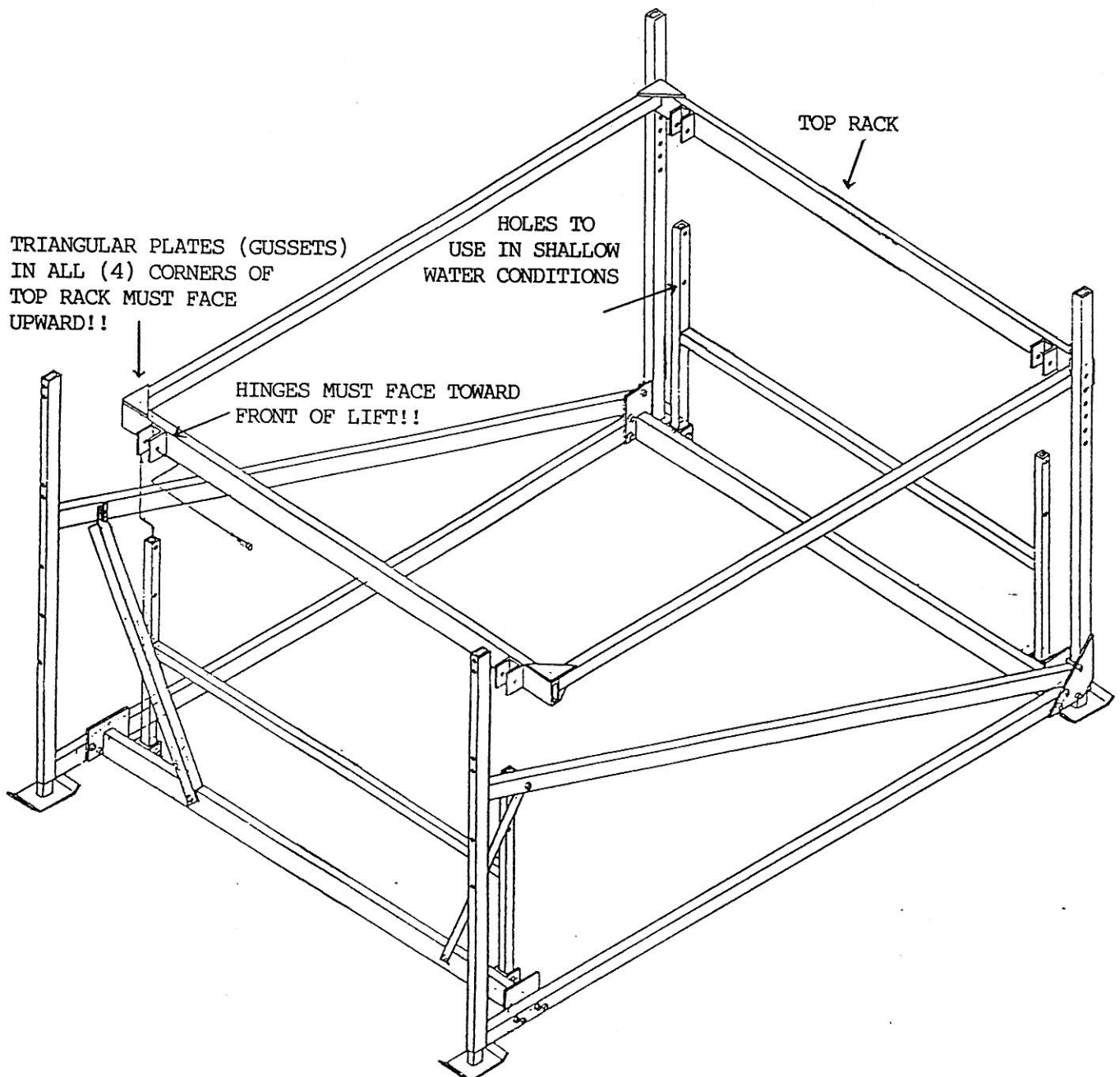
- (A) ATTACH THE TOP RACK TO THE I-BEAMS USING 1/2" X 4" MACHINE BOLTS AND LOCKING NUTS. DO NOT OVERTIGHTEN TO ALLOW FREE SWIVEL.

**\*\*NOTE\*\***

MAKE SURE THE HINGES ON THE TOP RACK FACE TOWARD THE FRONT OF THE LIFT AND THAT THE TRIANGULAR PLATES (GUSSETS) IN ALL (4) CORNERS OF THE TOP RACK FACE UPWARD.

**\*\*FOR PERMANENT SHALLOW WATER SITUATIONS\*\***

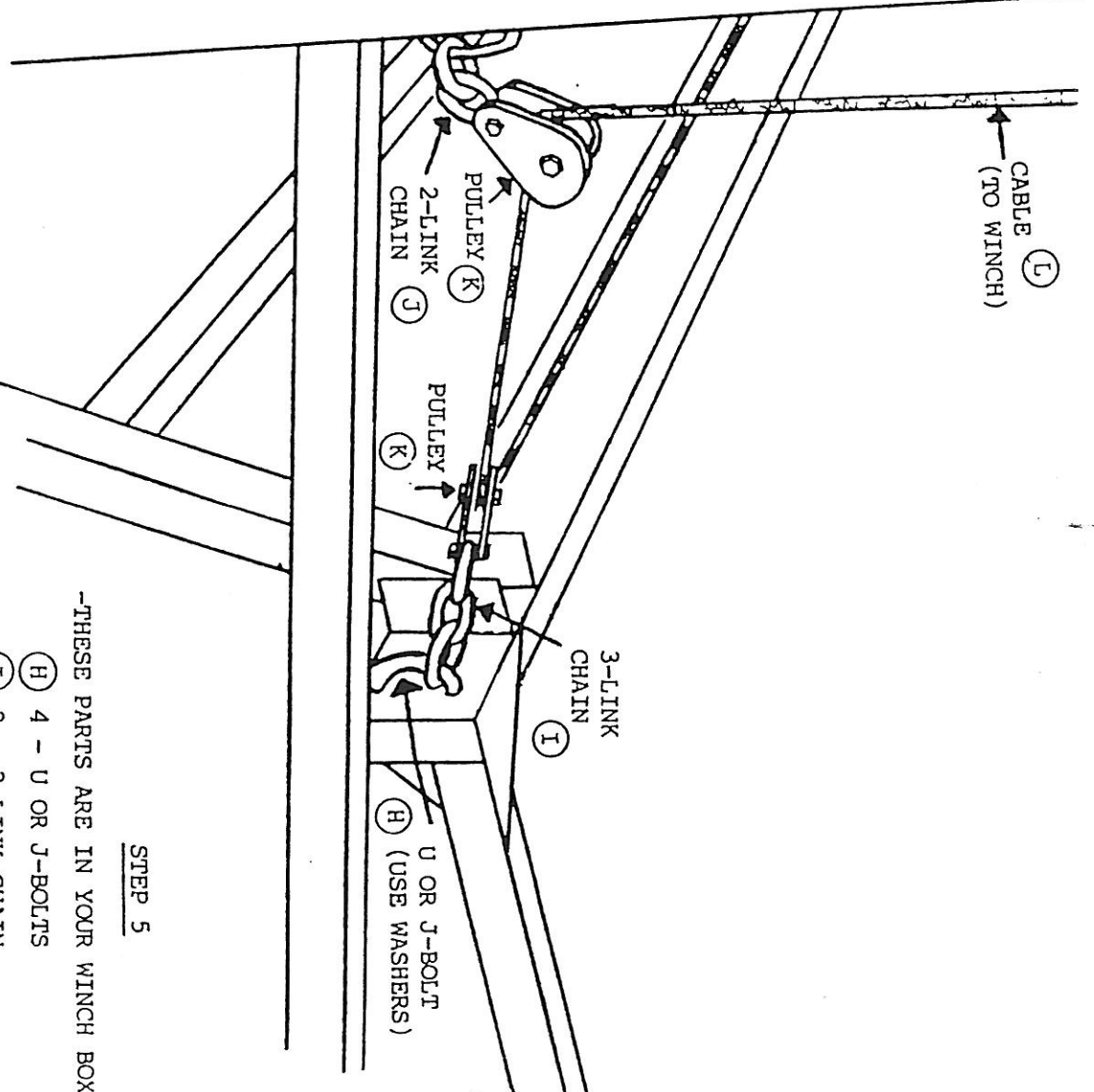
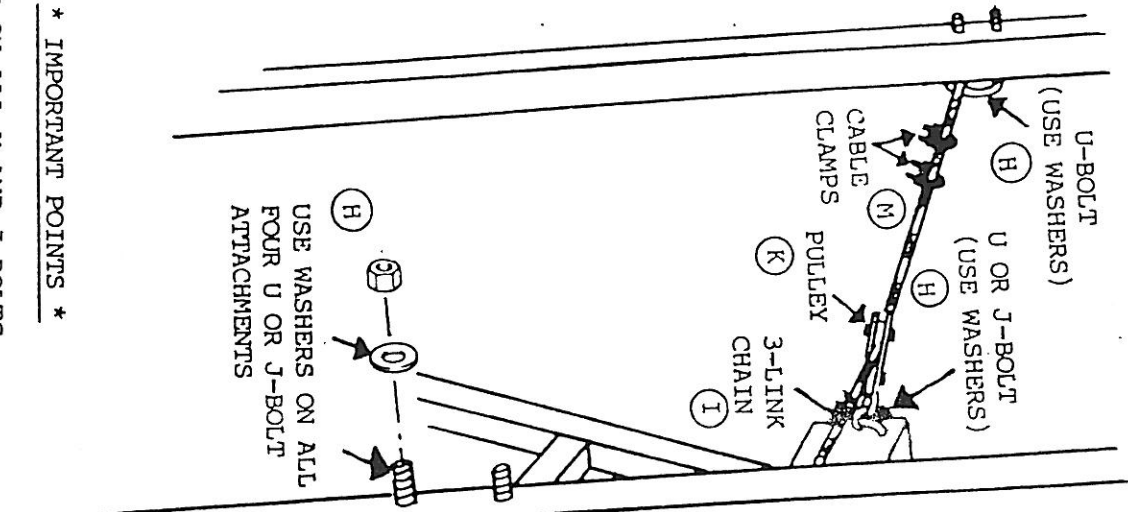
YOU MAY WANT TO SHORTEN YOUR I-BEAMS BY CUTTING THE TOP OF THESE OFF ABOUT 1" ABOVE THE SECONDARY HOLE SHOWN BELOW. A SIGNIFICANT ADVANTAGE IS GAINED ALLOWING FOR EASIER LIFTING ESPECIALLY IN FULLY LOWERED SHALLOW WATER CONDITIONS. PLEASE NOTE THAT THIS WILL PERMANENTLY REDUCE YOUR LIFTING RANGE FROM 40" TO 32".



\*\*GREASE PULLEYS!

STEP 4

\*\*BEFORE BEGINNING - IT MAYBE HELPFUL TO TIE THE RACK IN A RAISED POSITION BEFORE ATTACHING THE FOLLOWING PARTS.



\* IMPORTANT POINTS \*

1. USE WASHERS ON ALL U AND J-BOLTS.
2. A U-BOLT IS USED WHEN ATTACHING TO THE SIDES.
3. A U-BOLT OR J-BOLT IS PROVIDED TO ATTACH CHAIN LINKS AND PULLEYS TO THE TOP RACK (DEPENDING ON MODEL).
4. GREASE PULLEYS WHEN NEW AND EACH SPRING AND FALL.
5. TIGHTEN CABLE CLAMPS SECURELY.

STEP 5

-THESE PARTS ARE IN YOUR WINCH BOX

- (H) 4 - U OR J-BOLTS
- (I) 2 - 3-LINK CHAIN
- (J) 1 - 2-LINK CHAIN
- (K) 3 - PULLEYS
- (L) 1 - CABLE
- (M) 2 - CABLE CLAMPS



STEP 5

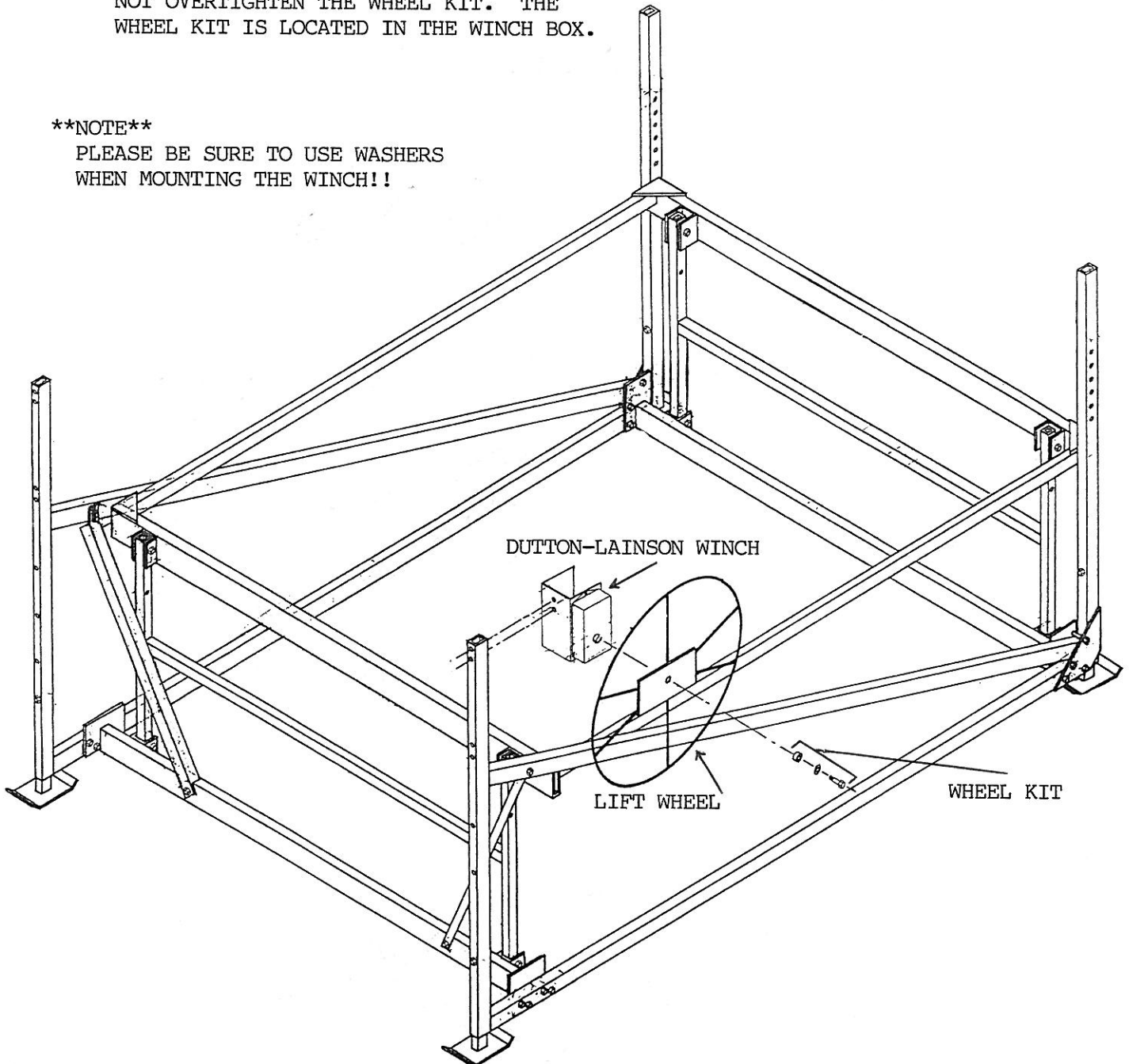
**\*\*IMPORTANT\*\***

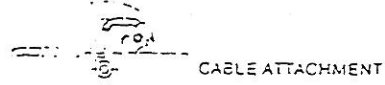
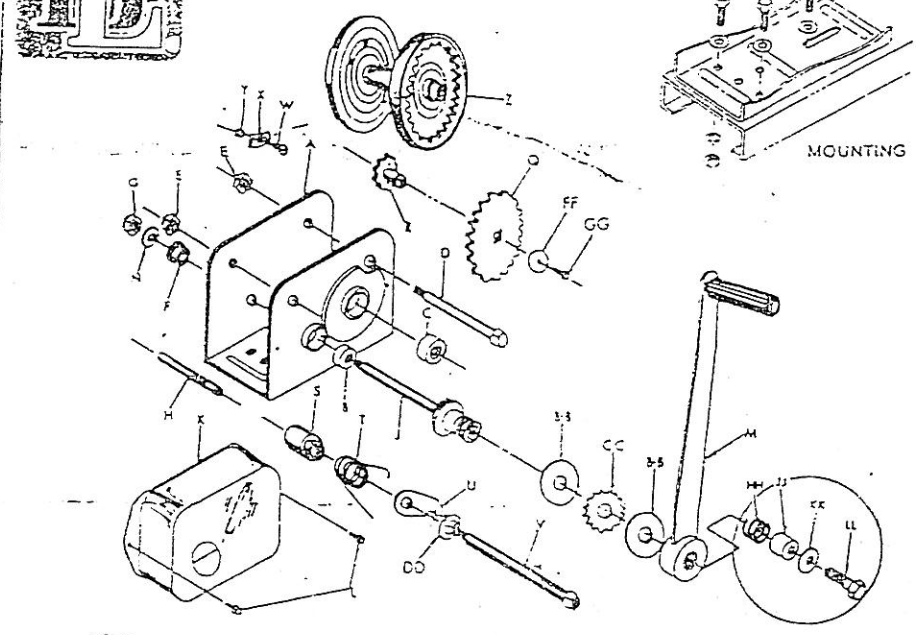
TO MOUNT A DUTTON-LAINSON WINCH ON THE OPPOSITE SIDE OF THE LIFT ALL THAT NEEDS TO BE DONE IS TO TURN THE WINCH UPSIDE DOWN AND MOUNT IT ON THE OPPOSITE UPRIGHT.

- (A) ATTACH THE LIFT CABLE TO THE WINCH THROUGH THE HOLE PROVIDED IN THE HUB AND SECURE IT BY USING A CLAMP THAT IS LOCATED IN THE WINCH BOX.
- (B) ATTACH THE WINCH TO THE FRONT UPRIGHT OF THE LIFT SIDE USING 3/8" X 3" MACHINE BOLTS AND WASHERS. PLEASE MAKE SURE THE WINCH IS AS STRAIGHT UP AND DOWN AS POSSIBLE.
- (C) TURN THE LIFT WHEEL ON THE THREADED SHAFT OF THE WINCH UNTIL IT IS SNUG AGAINST THE CLUTCH PADS.
- (D) MAKING SURE THE LIFT WHEEL REMAINS SNUG AGAINST THE CLUTCH PADS, ATTACH THE WHEEL KIT BY TURNING THE LOCK BOLT, WASHER, AND SPACER ON SNUG. DO NOT OVERTIGHTEN THE WHEEL KIT. THE WHEEL KIT IS LOCATED IN THE WINCH BOX.

**\*\*NOTE\*\***

PLEASE BE SURE TO USE WASHERS WHEN MOUNTING THE WINCH!!





**B1500**  
GEAR RATIO - 5:1  
LOAD CAPACITY - 1500  
REEL CAPACITY - 1/4" DIA. CABLE, 55 FT.